

ALEUM MONITORED BUTTERFLY VALVE – GROOVED

FEATURES

- Factory Installed Supervisory Tamper Switch Assembly
- Grooved Ends (AWWA C606)
- For Indoor and Outdoor Installations
- UL Listed
- FM Approved
- Nylon 11 Coated Body – Resistant to chipping

TECHNICAL DATA

- Code: VGBFHP-(size OD)-GEAR
- Size Range: DN65 – DN300
- Max. Working Pressure: 300 psi (2100 kPa)
- Max. Working Temp.: 120°C

DIMENSIONS

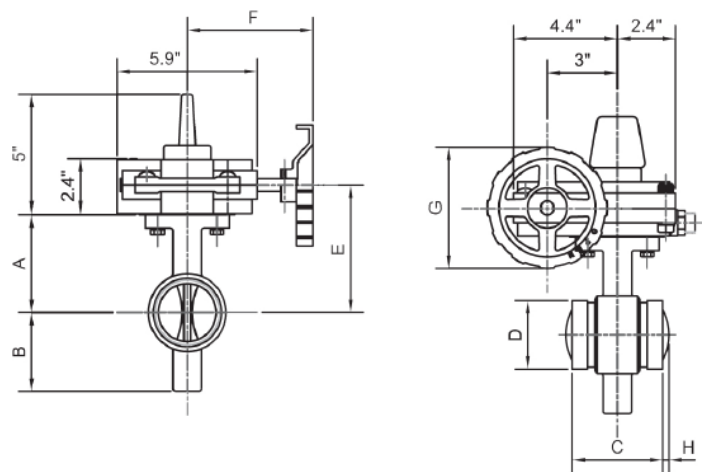
Size DN	A	B	F to F	D φ	E	F	G	H
65	105	95	96.4	76.0	135	135	128	
80	112	92	96.4	88.9	142	135	128	
100	145	108	115.4	114.3	175	135	128	
150	179	146	132.4	165.1	209	193	220	6.8
200	204	170	147.4	219.1	234	193	220	24.2
250	216	196	159.0	273.1		239	250	
300	254	226	165.0	323.9		239	250	

H: Disc clearance of body surface through end of disc in open position

All dimensions are in mm.

MATERIAL LISTING

Part Name	Material
Body	DI ASTM A-536 Nylon 11 coated
Disc	DI ASTM A-536 EPDM encapsulated
Upper & Lower stems	AISI 420-SS
Worm Gear Shaft	AISI 410-SS
Housing	DI ASTM A-536
Hand Wheel	DI ASTM A-536
Flag Indicator	DI ASTM A-536
Shear Pin	Steel ASTM A-510
Segment Gear	Brass ASTM B-584
Housing Gasket	EPDM Grade E
O-Rings (all)	EPDM Grade E



**ALEUMTECH
MODEL # HPG
Fireiser HPG**